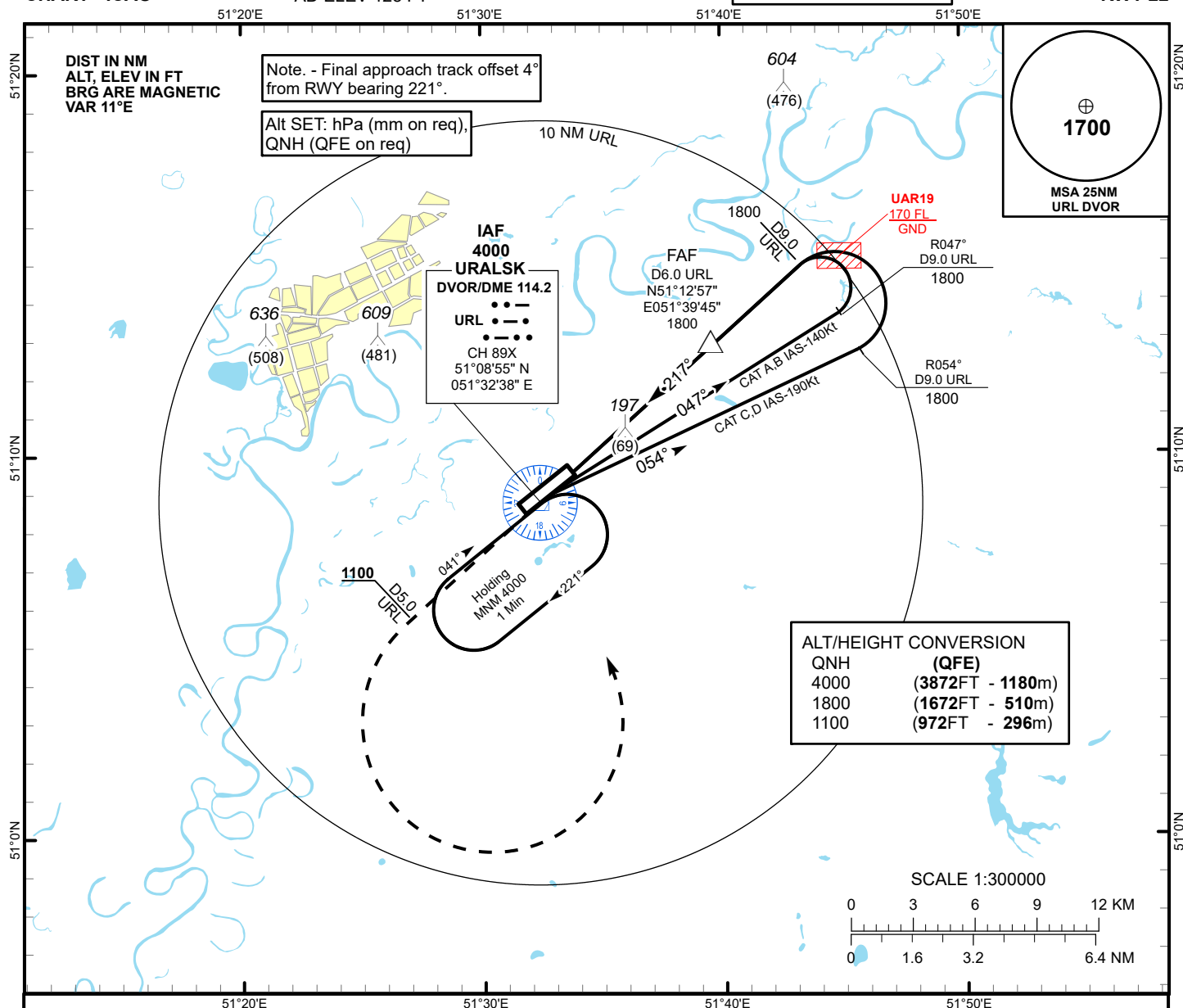
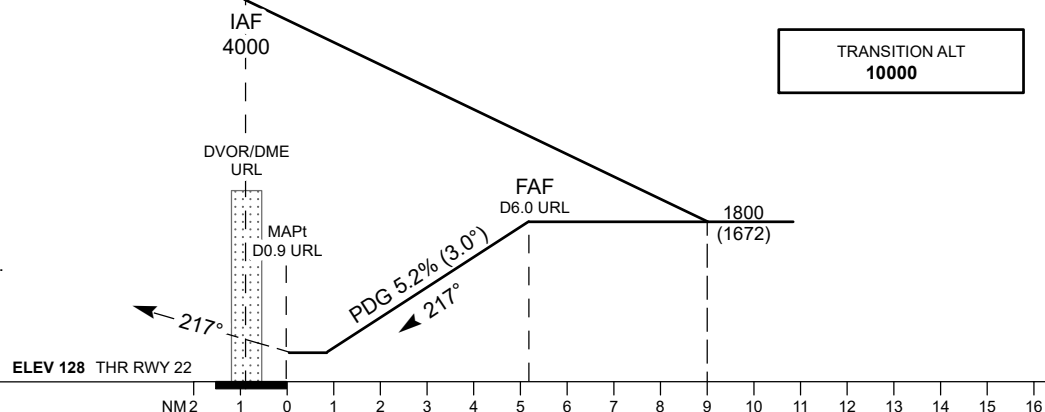


INSTRUMENT  
APPROACH  
CHART - ICAOAERODROME ELEV 128 FT  
HEIGHTS RELATED TO  
AD ELEV 128 FTURALSK TOWER 119.7  
URALSK ATIS (EN) 124.8  
URALSK ATIS (RU) 134.9URALSK  
VOR/DME  
RWY 22

## MISSED APPROACH

Climb on track 217°,  
at 1100 or above,  
outbound to D5.0 URL,  
turn LEFT to URL,  
Climb initially to 1800,  
then as directed by ATC.  
RADIO FAILURE: in the case  
of RCF climb to 4000 to URL  
and join to holding pattern.  
Missed approach turn speed  
limited to 240 Kt IAS maximum.

TRANSITION ALT  
10000

Aircraft Category		A	B	C	D	DIST to THR	NM	1	2	3	4	5	5.1
Straight-in Approach OCA/H						DME URL	NM	1.9	2.9	3.9	4.9	5.9	6.0
	VOR/DME	510(380)	510(380)	510(380)	510(380)	ALTITUDE	FT	495	814	1132	1451	1769	1800
						HEIGHT	FT	367	686	1004	1323	1641	1672
Aerodrome Operating Minima MDH ft x RVR(CMV)	VOR/DME					GS	Kt	80	100	120	140	160	180
						FAF-MAPt (5.1 NM)	min:sec	3:50	3:04	2:33	2:11	1:55	1:42
						Desc.Rate (5.2%)	ft/min	420	530	630	740	840	950

CHANGE: OCA/H.

URALSK  
VOR/DME

AERONAUTICAL DATA TABULATION

VOR/DME approach to RWY22 from URL DVOR/DME	
Fix/point	Coordinates
(IAF) URL DVOR/DME	51° 08' 55.2"N 051° 32' 37.6"E
(FAF) URL D6.0	51° 12' 56.7"N 051° 39' 45.0"E
THR RWY22	51° 09' 35.20"N 051° 33' 34.95"E
Final approach descent angle is 3°	